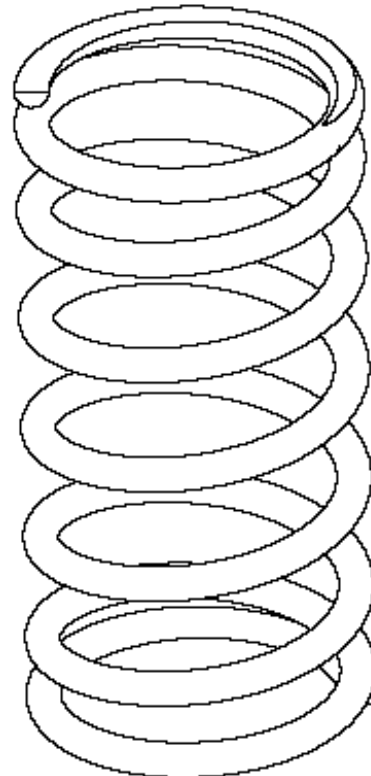
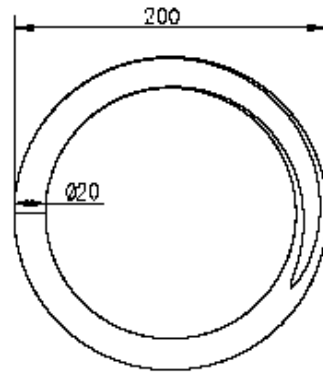
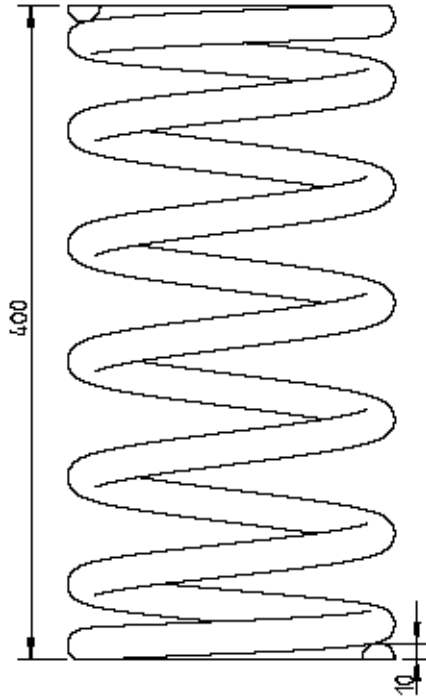




www.mobyitaly.it

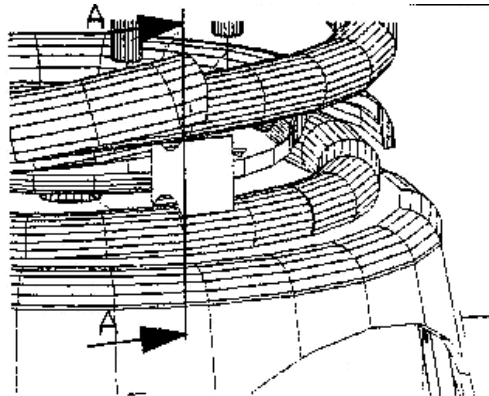
TECHNICAL DRAWING OF THE SPRING



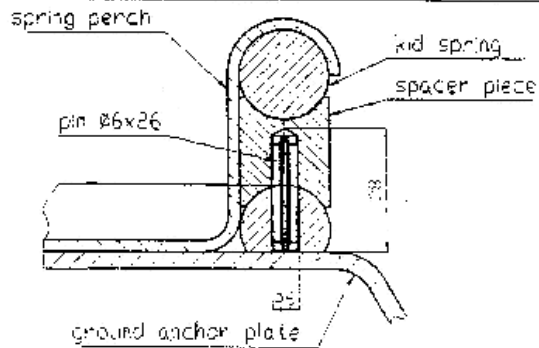


www.mobyitaly.it

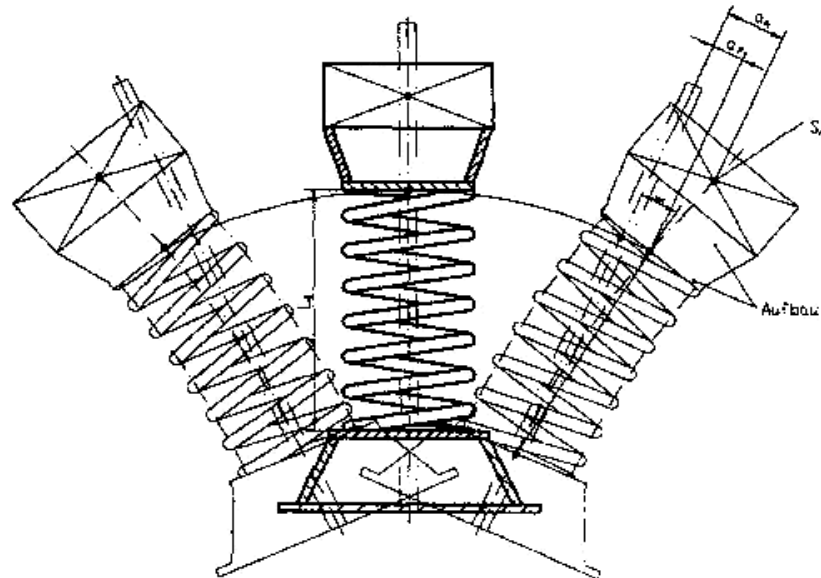
TECHNICAL DRAWING OF THE SPRING



sectional view "A-A" Scale 1:1



Spring and spacer drilled (ø 6)
Center position of pocket pole in spacer piece



	$\tan \alpha = \frac{a_m}{L_f}$
	$\alpha = \text{Schwingwinkel [}^\circ\text{]}$
$400x$ for d	56 $a_f = \text{Ausschlag Feder [mm]}$
$775x$ for d	186 $a_m = \text{Ausschlag Masse/System [mm]}$
	400 $L_f = \text{Federlänge [mm]}$
	$S_n = \text{Masse-Schwerpunkt}$